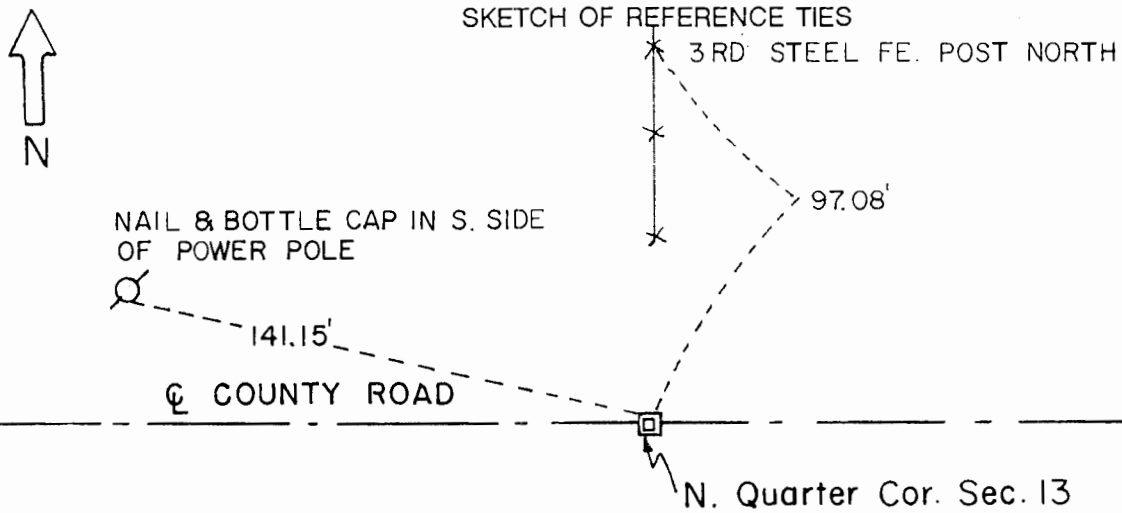


CERTIFICATE OF LOCATION OF GOVERNMENT CORNER

North Quarter Corner of Section 13 , Township 108 , Range 41 5th P.M.

STATE OF MINNESOTA, County of Murray.

Statement: Aug. 13, 1989 - Found a stone monument using Murray County Highway Department records. Placed a square Minnesota Department of Transportation Cast Iron Monument.



Statement of evidence relative to this corner location is on the back of page.

I hereby certify that this document and the data contained herein was prepared by me or under my direct supervision and that I am a duly Registered Land Surveyor under the laws of the State of Minnesota.

Duane A. Bonnerma 2-21-91 Date

Minnesota Registration No. 14895

OFFICE OF THE COUNTY RECORDER COUNTY OF MURRAY MAR 1 1 1991

I hereby certify that this document was filed in the County Recorder's office at .M. on the day of A.D., 19

County Recorder James V. Johnson

By , Deputy DOCUMENT NO.

North Quarter Cor. Sec. 13 T108N-R41W

Statement:

- September 1861 Original Government Land Office Surveyor L. G. M. Fletcher records in his field notes, "Built mound with trench pits, charred stake per instructions."
- 1934+ The Murray County Highway Engineer's Office records in the County Surveyor's Record Book "stone" and then they note witness ties to the corner.
- April 17, 1979 The Murray County Highway Engineer's Office notes that they found a field stone 21 inches below grade. They also noted witness ties to the corner.
- Aug. 31, 1989 Duane A. Bonnema, LS Reg. No. 14895, found a 3/4 inch x 8 inch long re-rod at the subgrade level of the road. An 8 inch x 12 inch x 12 inch stone was found 3 feet below the road surface. Natural ground was found to be also 3 feet below the road surface. A square Minnesota Department of Transportation Iron Monument with an aluminum cap was placed at the road surface.